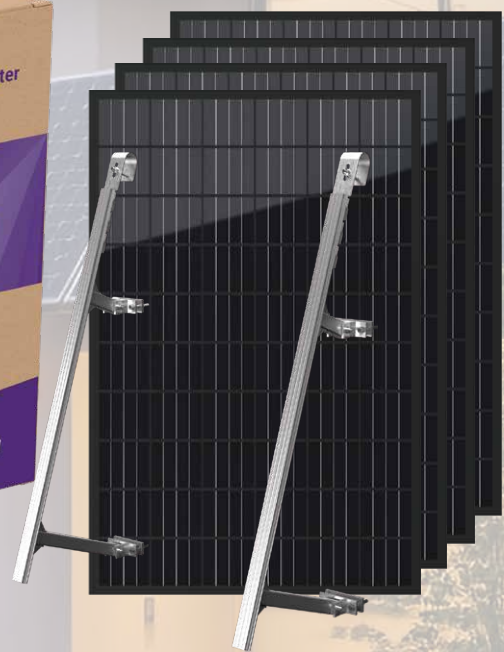
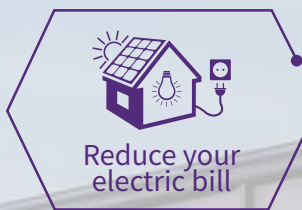


Solar Kits VSKW

VaySunic Solar Kits For Wagon

VaySunic launched VSKW (VaySunic Solar Kits For Wagon Fit) series Solar On-Grid Kits for residential PV systems. It is a “Plug-and-play design” composed of solar panel, microinverter and bracket, which can be installed by yourself.

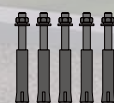
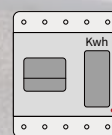
VSKW is even smaller in size and you can put it in the car for easier transportation.



Power Cord
Plug and play cable

Junction Box
Breaker and Energy Meter

Accessories
Mounting fittings



Residential On-Grid PV Kits

VSKW SERIES

SYSTEM SIZE				
PRODUCT MODEL	VSKW-400W	VSKW-450W	VSKW-800W	VSKW-1000W
PV System Size Nominal(Wp)	400W	450W	800W	1000W
PV MODULE SPECIFICATION				
Panel Model	N-Topcon 250M10			
Power(W)	250W			
Vmp(V)	19.4			
Voc(V)	22.3			
Isc(A)	13.57			
Imp(A)	12.89			
Dimensions(L x W x H)(mm)	1535*765*30mm			
PV module weight(kg)	12.39kg			
PV System Color	Silver or Full Black			
Certifications	IEC ISO TUV CE			
MICROINVERTER SPECIFICATIONS				
Inverter Size(w)	400	450	800	1000
Max DC Power(W)	430	490	870	1080
Max DC Voltage(V)	65			
MPPT Voltage range(V)	33-48		33-48	
No.of MPPT'S	1		2	
Max AC Power(VA)	400	450	800	1000
Max Output Current(A)	1.74	1.96	3.48	4.50
AC Nom.Voltage/Voltage Range(V)	230/180 ~ 275			
AC Grid Frequency range(Hz)	50/45 - 55			
Number of phases	1			
Dimensions(L x W x H)(mm)	300 x 126 x 32		361 x 222 x 36	
Inverter weight(kg)	1.8		3.2	
Compliance	IEC/EN 62109-1,IEC/EN 62109-2,IEC/EN 61000-6-1/-2/-3/-4,EN50549-1: 2019,VDE-AR-N 4105: 2018,CEI0-21			
* 12/240VUL inverters also available upon request				
SYSTEM LAYOUT				
# of Modules	2		4	
# of inverters			1	
# of inputs	1		2	
PV Layout options	Landscape or Portrait			
PV Array Surface Area(m ²)	1.2		2.4	
PV Array Weight(kg)	12.4		24.8	
PRODUCTION ESTIMATES(KWh)				
*Projected yearly output at 1100GHI/yea	822	925	1647	2059
*Projected yearly output at 1460GHI/yea	1091	1228	2186	2733
*Projected yearly output at 1825GHI/yea	1363	1535	2733	3417
*Based on 0.85% system derating(formula=DC Power x peak sunshine hour/year x derate factor)(GHI=Global horizontal irradiance)				
SYSTEM OPTIONS				
Wifi Monitor	Wifi or Sub-1G			
Battery Bank	Optional			
Mounting System Types				
Weight(kg)	7.5kg			
Dimensions(L x W x H)(mm)	1050*880*33mm			
Frame	Anodized Aluminum Alloy			